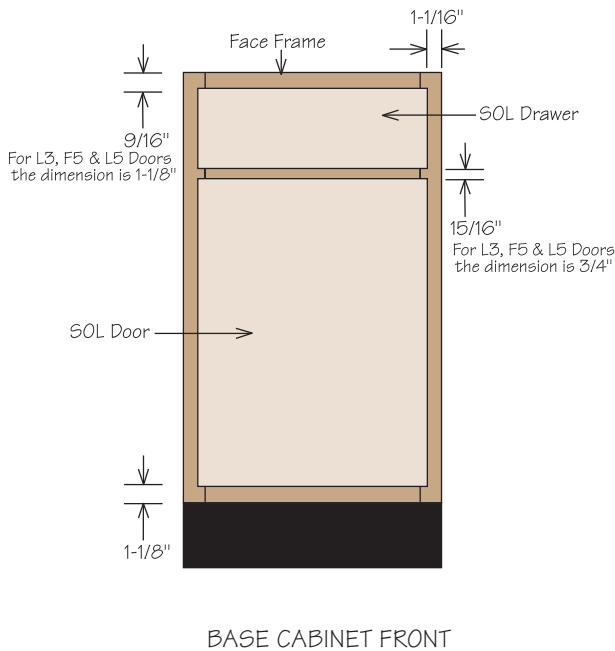
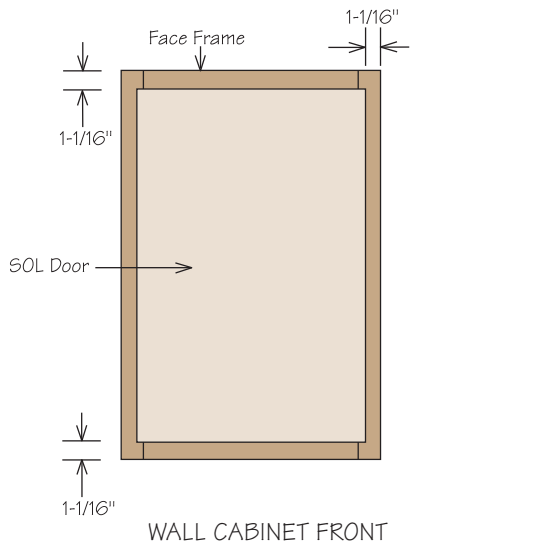


The drawings shown below illustrate the relationship between the cabinet face frame and Standard Overlay (SOL) and Full Overlay (FOL) doors. They show the amount of the cabinet face frame that is visible when Standard Overlay doors or Full Overlay doors are used.

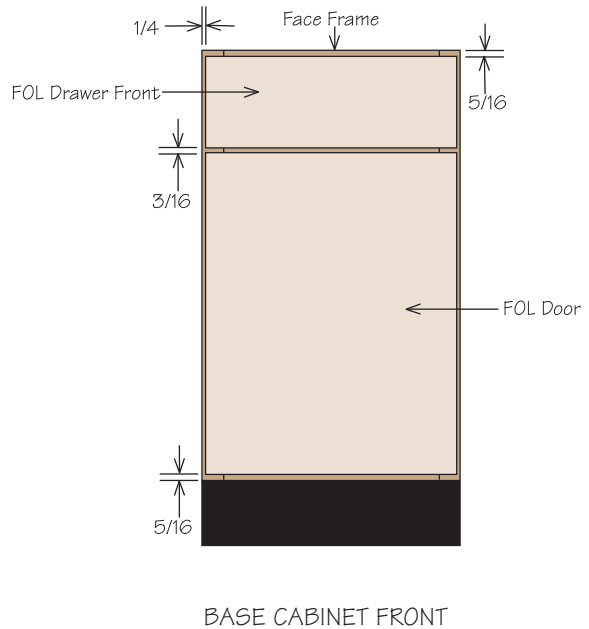
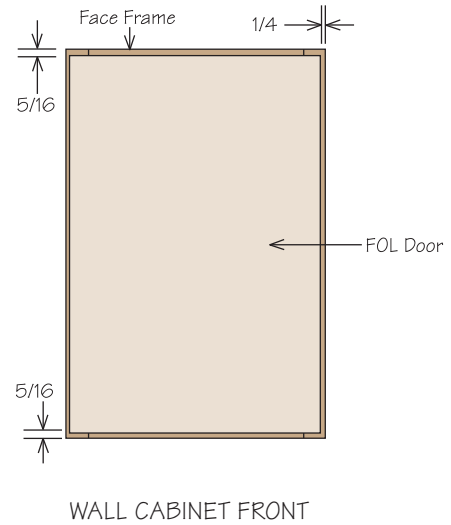
## STANDARD OVERLAY

Standard Overlay (SOL) doors and drawers give a cabinet a framed appearance.



## FULL OVERLAY

Full Overlay (FOL) doors and drawers give the cabinet a frameless appearance since less of the face frame is visible.



## 16 Wood Species & Materials

Timberlake Cabinet Company cabinets incorporate solid hardwoods and hardwood veneers. Because these are natural materials, with inherent variations, our quality standards establish tolerance ranges for matching the hardwood pieces. Consumers should review actual samples of hardwoods in our selling centers and cabinet displays to help them establish realistic expectations of variations involving wood grain, color tones, presence of knots, and so forth. These variations are at the heart of the unique natural beauty of finished hardwood. In addition, exposure of wood products to sunlight, some chemical agents and smoke can cause wood colors to change over time.

### CHERRY

Cherry is a closed grained hardwood with occasional pin knots and fine grain variations appearing as curls and waves. The natural color of cherry ranges from a pale yellow sapwood to deep reddish brown heartwood. Cherry has long been a hardwood of choice for fine furniture. Staining reveals subtle variations and colors, which typically darken over time.

### MAPLE

Maple is a finely grained, exceptionally hard wood specie. Maple's natural colors range from creamy white to light blonde tones to dark reddish-browns. As with other wood species, darker stains will reduce the natural wood color variation. Characteristically, maple will display some wavy, curly, bird's eye or burl graining. It may reveal occasional dark mineral streaks and cross-grained worm track-ing—features which are natural in the wood and not considered defects.

### OAK

Oak is a prominently grained hardwood, with pattern variations from straight grain to arcs. Natural oak colors range from light tans to deep reddish browns. When finished with a light colored stain, noticeable differences in color will be evident between the open- and closed-grain areas of the wood. Darker stain colors will provide a more uniform appearance. Oak is attractive as well as durable and forgiving of nicks and bumps, making it an ideal furniture and cabinet wood.

### HICKORY

Hickory is a very tough, dense hardwood, making it an extremely durable cabinet material. It is known for dramatic color variation, ranging from deep reddish-brown heartwood to pale-white sapwood. Darker stains moderate the color variance in hickory. Unlike other hardwoods, wood selection for hickory cabinets does not attempt to minimize discrepancies in wood color tones. Knots and streaks are considered an inherent aspect of the charm of hickory cabinets.

### WHITE THERMO FOIL

Thermo Foil finishes allow white cabinet doors to exhibit the same fine styling and detail usually found in solid wood doors. White Thermo Foil finishes are extremely durable and easy to clean. The Thermo Foil finish found on the front of white cabinet doors is produced when a PVC molded plastic is bonded to a pre-machined core material using heat and pressure. The core of a white Thermo Foil door is medium density fiberboard (MDF) with a white melamine back.

### MELAMINE

Melamine is an attractive, durable finish found on select Value-Built by Timberlake doors. It is also used on all white cabinetry door styles to finish shelves, returns, and tops and bottoms of the cabinet box. It is a hard wearing finish that is chemical and moisture resistant.

## Finishing Systems

The finishing system used on our products was exclusively developed and specifically designed to meet the needs of our customers. State-of-the-art equipment allows precise sanding, filling and finish coverage.

## Exterior Wood BeautyGuard® Finish System

Timberlake's 15-Step BeautyGuard® Finish System is an extremely sophisticated and environmentally friendly coating that offers durability, ease of cleaning, and high water resistance. In every one of our products, we use a combination of mechanical processes to bring out the richness, luster, and natural grain definition of the wood, as well as computerized automation to ensure color consistency and surface smoothness. Our products go through a rigorous 15-step process that includes sanding, brushing, cleaning, stain application, computerized oven drying and a catalyzed top-coat to protect and beautify your cabinets for years to come.

## TuffTech® Finishing Process

Our TuffTech® finish process uses only 100% solids. This multi-step panel finishing process begins with three sanding operations followed by a top and bottom brush cleaning to provide a smooth surface for material adhesion. Next, an ultraviolet (UV) filler is cured using light ovens to seal the board completely. Once again the board is sanded and a waterborne adhesion material is applied and dried to provide an interlocking bond with the water-based paints. Depending on the product, two or three coats of paint are applied, dried and then covered with an ultraviolet top coat. This top coat is made of acrylics and urethane and acts as a sealant to protect the paint.

White cabinet panels are finished with a melamine impregnated laminate. This process has the same protective properties as our coating process but with the added benefit of improved opacity required by all white cabinet parts.

## Our Panel Finish System Is Environmentally Sensitive

We use only water-based paints and fillers which result in no hazardous waste or water contamination. Further, our acrylic and urethane materials are 100% solids and cured using high intensity lights. No emissions are released into the atmosphere and no material evaporates, leaving a system that is safe for all of us.

## What does this mean to you?

Our products are extremely resistant to stains and surface damage that can be caused by common household chemicals. Our products exceed KCMA and ANSI standards for resistance to stains like coffee, grape juice and moisture—all common in any kitchen.

## How do you care for your cabinets?

Remove dust from cabinets frequently with a soft lint-free cloth. The cloth may be slightly dampened with water or a spray type dust remover. Wood and laminate cabinet surfaces may be polished once every few months with a high quality, non-oil based furniture polish. Do not use a paste wax type material. Wax build-up is difficult to remove and will leave a residue that attracts dust and moisture. Polishes containing silicon should not be used. Clean spills immediately. Use a clean cloth and mild soap if necessary. Wipe dry with a clean soft cloth. Do not use bleach, detergents, citrus or ammonia based cleaners, steel wool, soap pads or abrasive cleaners on your cabinets.

Care should be taken that cabinet finishes are not exposed to heat in excess of 174° Fahrenheit. Do not place or mount small appliances beneath your wall cabinets. These appliances (such as coffee makers and toasters) can produce excessive heat, which can damage the finish of your cabinets. Do not expose doors or drawer fronts (especially Thermo Foil) to heat created from self-cleaning ovens or stoves. The HSK (Heat Shield Kit) should be used when cabinets are installed or mounted directly next to ovens or stoves.

## Let your cabinets age beautifully

Our cabinets represent the careful selection of woods, melamine laminate and white Thermo Foil. While every effort is made to match wood grain as closely as possible, no two pieces of wood are exactly alike, even from the same tree. These differences in natural color and grain mean that each piece will respond differently to the finishing materials used. For example, closed grain woods absorb less and will vary in color from more open-grained pieces from the very same tree. It's these variations that contribute to the beauty and distinction of quality wood products. However, exposure to sunlight, smoke and chemicals may cause some materials to fade or vary from their original color over time.





This is why cabinets, doors and drawer fronts or accessories added at a later date may not exactly match cabinets installed now. You should also read all cleaning agent instructions carefully before application. For the same reasons, door samples or displays may not represent the exact color of cabinets received at the time of shipment.

Due to changes that occur from natural and environmental factors a cabinet is exposed to over its lifetime, we cannot be responsible for variations that occur in the finish of your wood, Thermo Foil or melamine cabinets as they age.

So, enjoy the character of your cabinets. They are truly unique and with proper care, they will age beautifully for years to come.

## Construction Options Legend

Construction option icons used in this guide are shown below. Icons indicate which Construction Options are available for a particular cabinet. Icons appear within the SKU cabinet product boxes.

-  **ID** Increased Depth
-  **RD** Reduced Depth
-  **TPS** TuffTech® Plywood Side Option
-  **MI** Matching Interior

**NOTE:** 1. When a bullet ● is included within the Icon, it indicates that the construction option is available for all SKU's in that cabinet product box.

ex:  **RD**

2. When a square ■ is included within the Icon and next to the SKU, it indicates that the construction option is ONLY available for specific SKU's.

ex:  **MI** ■ **W2442 MFD**

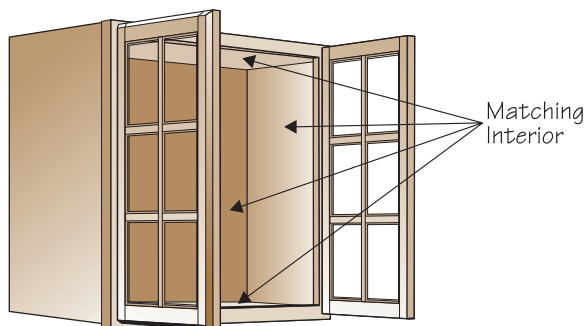
3. When nothing appears within the Icon, it indicates that the construction option is NOT available for any items within the SKU product box.

ex:  **TPS**

## Matching Interior Cabinet Option

The Matching Interior Cabinet Option is only available on Mullion Frame Door Cabinets (MFD) and Open Frame Door Cabinets (OFD) when you need to match the cabinet's interior sides to those of the cabinet's exterior sides. The interior finish will be the same print finish as the exterior sides of the cabinet.

The Matching Interior Cabinet Option is designated with an  icon.



**NOTE:** 1. The Matching Interior Cabinet Option is NOT available for cabinets with the TuffTech® Plywood Side Option.

2. All finished surfaces of cabinet will be color matched including shelves, interior/exterior of top/bottom, corner wall back post and back side of peninsula wall face frames.

3. Maple natural and white cabinet door styles come with a matching interior as a standard feature.

4. Available in all Value-Built by Timberlake door styles except Olympia (A1H) and Bainbridge (B5W).


### Premium Finish Cabinet Option

Our Premium Finish colors, Maple Mocha and Cherry Chocolate, accentuate the detailing and textures of the cabinetry.

- **Maple Mocha—Available on Rushmore Maple door styles:** Dark brown glaze settles into recesses, corners and grooves of caramel colored wood to add definition and a rich patina.
- **Cherry Chocolate—Available on Rushmore Cherry door styles:** Deep, brown glaze settles into the recesses, corners and grooves of warm spice finished cherry to add definition and a lustrous, deep color.

When ordering a Premium Finish, Timberlake Cabinet Company strongly recommends you order matching WEPs, BEPs and TEPs for all exposed cabinet sides. This will ensure the best possible look for your Premium Finish cabinetry.

### Increased Depth Cabinet Option

The Increased Depth Cabinet Option is used when ordering wall style cabinets deeper than the standard 12" depth. The Increased Depth option is available on Wall (W), Peninsula Wall (PW), Blind Wall (BLW), Blind Peninsula Wall (BLPW) and Straight Appliance Garage (AGS) cabinets through 36" wide. Increased Depth wall cabinets are available in 1" increments from 13" to 24" deep. Increased depth cabinets are designated with an  icon.

When ordering, specify the cabinet depth, not the amount the cabinet is increased. (ex. W1530-ID13 deep).

#### NOTE:


##### Wall Cabinets:

- Any Wall Cabinets increased to more than 18" in depth must be stacked, floor mounted or installed over a refrigerator.
- Increased Depth Wall Cabinets 18" or less in depth may be wall mounted using standard installation procedures.
- All Increased Depth Wall Cabinets must be securely attached to studs in back wall and both sides or studs in back wall, one side and top. (i.e. two adjacent cabinets or one adjacent cabinet and a wall)

##### Peninsula Wall (PW) and Blind Peninsula Wall (BLPW) Cabinets:

- Any Peninsula Wall Cabinet increased to more than 15" in depth must be stacked or floor mounted.
- Increased Depth PW and BLPW Cabinets 15" or less in depth may be mounted at ceiling height using standard installation procedures.
- When mounting at ceiling height the cabinet must be securely attached to the ceiling rafters and to at least one other properly mounted cabinet or structural wall.
- Additional 2 x 4 bracing may be required above ceiling if cabinets are not located directly below a rafter.
- Mount to the ceiling using mounting screws of sufficient length to go through ceiling treatment and into the rafter at least 1". Screws must be installed at both front and back of cabinet on no greater than 16" centers, with a minimum of four screws per cabinet.

### TuffTech® Plywood Side Option

The TuffTech® Plywood Side Option is available on cabinets identified with an  icon and consist of 5 ply panels:

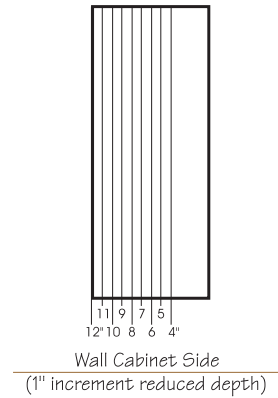
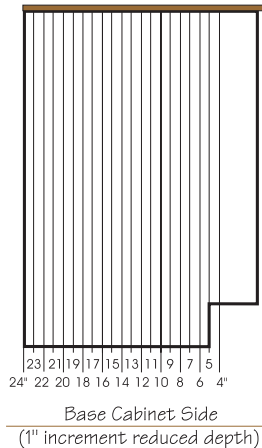
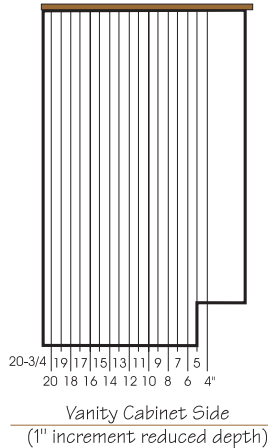
- Three inner plys are 1/10" hardwood veneer providing strength and rigidity.
- Both exterior plys are 1/10" furniture grade MDF providing a smooth and durable surface.
- Exterior surfaces are finished with durable TuffTech® print finish.
- Not available in white door styles.
- Not available in Value-Built by Timberlake.

**NOTE:** Not available with Matching Interiors .

## 20 Construction Options

### Reduced Depth Cabinet Option

The Reduced Depth Cabinet Option is to be used when ordering non-standard depth cabinets. If you need a wall cabinet that is less than 12" deep or a base cabinet that is less than 24" deep, use this option. Reduced Depth Cabinets are available in 1" reductions with a minimum cabinet depth of 4". Reduced Depth Cabinets are designated with an **RD** icon.



When ordering, specify the cabinet depth, not the amount of the depth reduced (ex. B24-RD17 deep).

- NOTE:**
1. There is a potential tipping hazard for Reduced Depth Cabinets until they are mounted to a wall.
  2. Peninsula base cabinets reduced to 11" or less WILL NOT HAVE a toekick.
  3. Minimum Depth for Appliance Garage is 5".

RD Depth	Drawer Depth Base Cabinets Portfolio Select & Portfolio	Drawer Depth Value-Built Base Cabinets	Sliding Shelf Depth	Toe Kick	Shelf
		Portfolio Select, Portfolio & Value-Built Vanity Base Cabinets			
23	18	18	18	Yes	Yes
22	18	18	18	Yes	Yes
21	18	18	16	Yes	Yes
20	15	14	16	Yes	Yes
19	15	14	16	Yes	Yes
18	15	14	15	Yes	Yes
17	12	14	14	Yes	Yes
16	12	9	13	Yes	Yes
15	12	9	12	Yes	Yes
14	9	9	11	Yes	Yes
13	9	9	10	Yes	Yes
12	9	9	9	Yes	Yes
11-6	0	0	0	Yes	Yes
5-4	0	0	0	No	Yes

### Dovetail Full Access Drawer Option

Dovetail Full Access Drawers come standard in Timberlake Portfolio Select and are available as an optional upgrade in Timberlake Portfolio door styles. This option is not available in Value-Built by Timberlake door styles. Vanity and 21" desk cabinets ordered with this option will feature dovetail drawers with side mounted drawer glides.