



TALL CABINET DESCRIPTION

Tall Cabinets are designed as either tall utility type cabinets or tall oven type cabinets. They range in size from 84" to 96" tall, 12" to 24" deep and 12" to 36" wide.

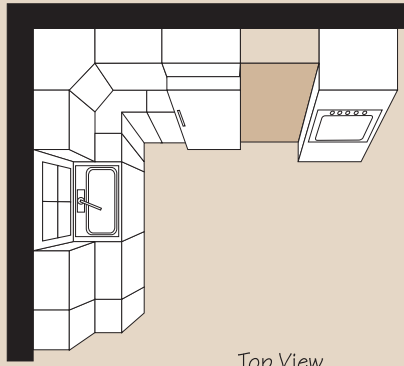
Tall Cabinet Coding:

UT	18	24	x	90
Cabinet Type (Utility Cabinet)	width in inches	depth in inches		height in inches

Construction Options & Modifications Code:

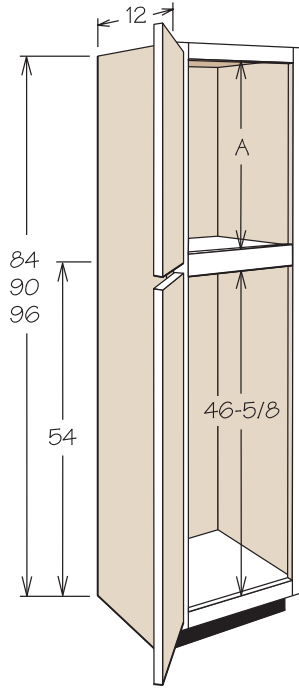
RD.....Reduced Depth

TPS.....TuffTech™ Plywood Sides

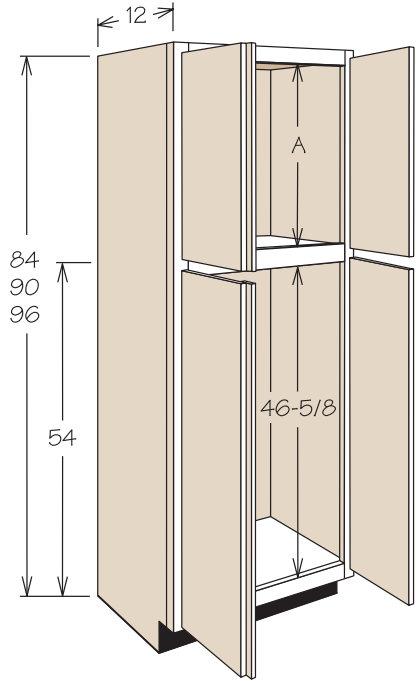


Top View

Utility - 12" deep, 2 doors



Utility - 12" deep, 4 doors



Tall Utility Cabinets

Tall utility cabinets range in size from 84" to 96" high, from 12" to 24" deep and from 12" to 36" wide.

Note: Cathedral doors are not available in base and vanity cabinets.

Single door Cathedral Cabinets must be ordered left or right.

Utility cabinets may be customized with shelving, slide out kits or pantry kit accessories. Must be ordered separately. See Tall Cabinet Accessories.

- UT1212X84
- UT1512X84*
- UT1812X84
- UT1512X90*
- UT1812X90
- UT1512X96*
- UT1812X96

- RD
- TPS

- Shelves can be ordered separately. See Tall Cabinet Accessories for details.
- 96" high have 4" toe kick assembly shipped inside cabinet.
- 84" high: A = 26-7/8"
- 90" high: A = 32-7/8"
- 96" high: A = 38-7/8"

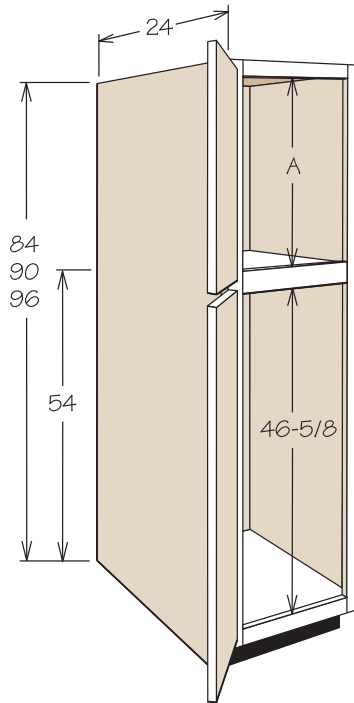
* Not available in Maple Frost or Oak Frost.

- UT2412X84
- UT2412X90
- UT2412X96

- RD
- TPS

- Shelves can be ordered separately. See Tall Cabinet Accessories for details.
- 96" high has 4" toe kick assembly shipped inside cabinet.
- 84" high: A = 26-7/8"
- 90" high: A = 32-7/8"
- 96" high: A = 38-7/8"

Utility - 24" deep, 2 doors



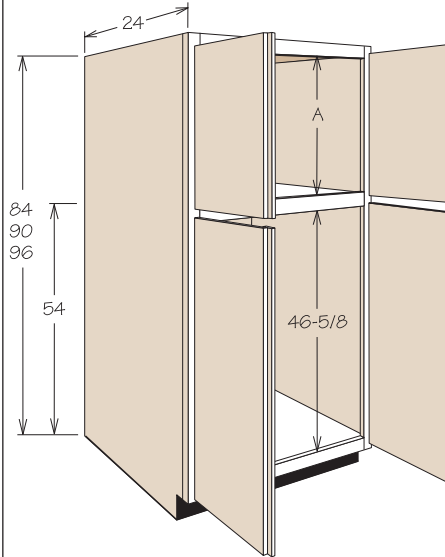
UT1224X84
 UT1524X84*
 UT1824X84
 UT1524X90*
 UT1824X90
 UT1524X96*
 UT1824X96

● RD
 ● TPS

- Half and full depth shelves can be ordered separately.
- Other optional interior accessories available—see Tall Cabinet Accessories.
- Cabinet backs are pre-drilled to accept up to 4 roll out trays in the lower section.
- 84" high: A = 26-7/8"
 90" high: A = 32-7/8"
 96" high: A = 38-7/8"

* Not available in Maple Frost or Oak Frost.

Utility - 24" deep, 4 doors

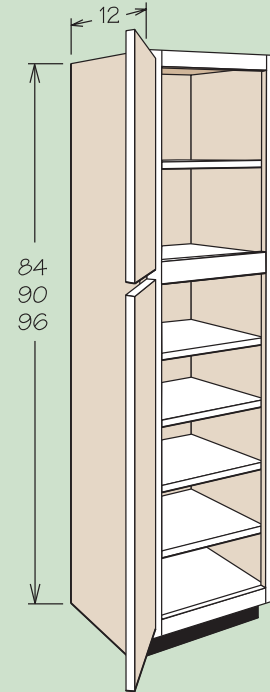


UT2424X84 UT2424X96
 UT3024X84 UT3024X96
 UT3624X84 UT3624X96
 UT2424X90
 UT3024X90
 UT3624X90

● RD
 ● TPS

- Half and full depth shelves can be ordered separately.
- Other optional interior accessories available—see Tall Cabinet Accessories.
- Cabinet backs are pre-drilled to accept up to 4 roll out trays in the lower section.
- 84" high: A = 26-7/8"
 90" high: A = 32-7/8"
 96" high: A = 38-7/8"

Utility - 12" deep, 2 doors with Adjustable Shelves



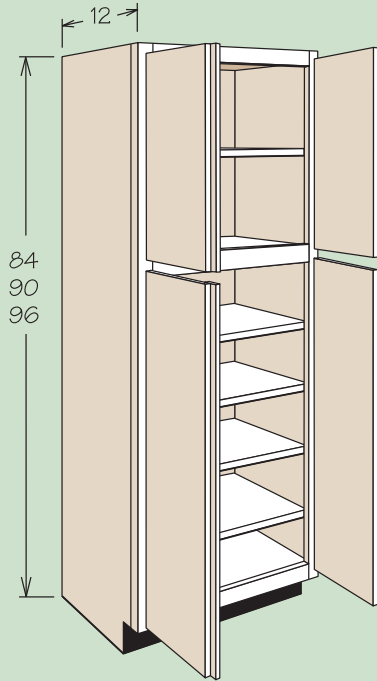
UT1212X84 AS
 UT1512X84 AS*
 UT1812X84 AS
 UT1512X90 AS*
 UT1812X90 AS
 UT1512X96 AS*
 UT1812X96 AS

● RD
 ● TPS

- 96" high has 4" toekick assembly shipped inside cabinet.
- 84" high has one full depth shelf in the top and four full depth shelves in the bottom.
- 90" high has two full depth shelves in the top and four full depth shelves in the bottom.
- 96" high has three full depth shelves in the top and four full depth shelves in the bottom.
- All shelves are 3/4" thick and are packaged separately.

* Not available in Maple Frost or Oak Frost.

Utility - 12" deep, 4 doors with Adjustable Shelves

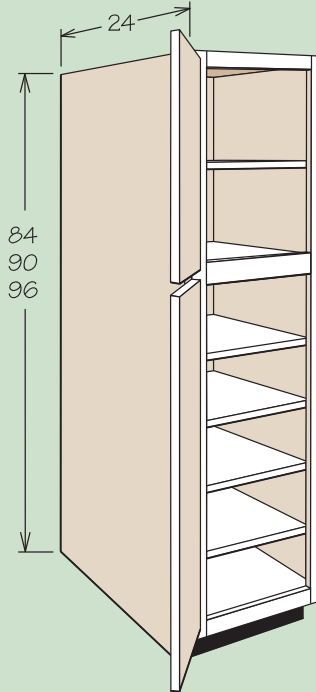


UT2412X84 AS
UT2412X90 AS
UT2412X96 AS

● RD
● TPS

- 96" high has 4" toekick assembly shipped inside cabinet.
- 84" high has one full depth shelf in the top and four full depth shelves in the bottom.
- 90" high has two full depth shelves in the top and four full depth shelves in the bottom.
- 96" high has three full depth shelves in the top and four full depth shelves in the bottom.
- All shelves are 3/4" thick and are packaged separately.

Utility - 24" deep, 2 doors with Adjustable Shelves



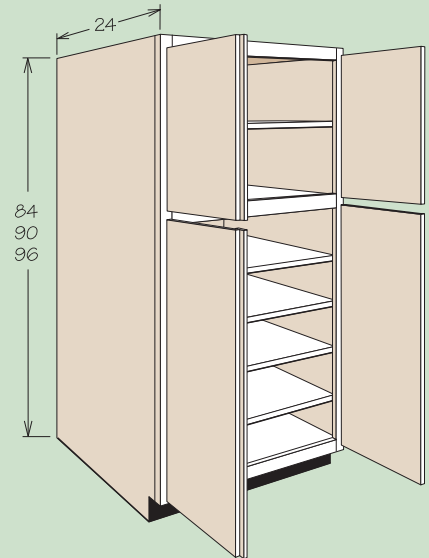
UT1224X84 AS
UT1524X84 AS*
UT1824X84 AS
UT1524X90 AS*
UT1824X90 AS
UT1524X96 AS*
UT1824X96 AS

● RD
● TPS

- 96" high has 4" toekick assembly shipped inside cabinet.
- 84" high has one full depth shelf in the top and four full depth shelves in the bottom.
- 90" high has two full depth shelves in the top and four full depth shelves in the bottom.
- 96" high has three full depth shelves in the top and four full depth shelves in the bottom.
- All shelves are 3/4" thick and are packaged separately.

* Not available in Maple Frost or Oak Frost.

Utility - 24" deep, 4 doors with Adjustable Shelves

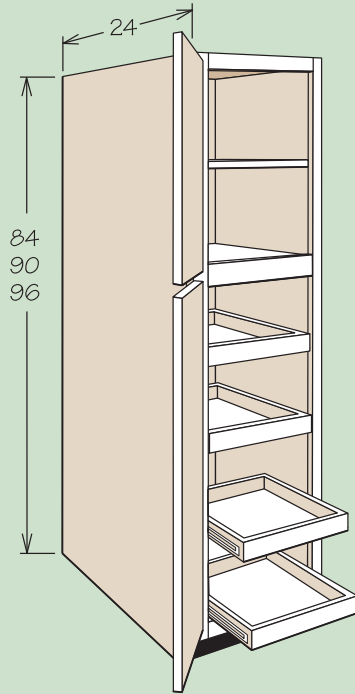


UT2424X84 AS
UT3024X84 AS
UT3624X84 AS
UT2424X90 AS
UT3024X90 AS
UT3624X90 AS
UT2424X96 AS
UT3024X96 AS
UT3624X96 AS

● RD
● TPS

- 96" high has 4" toekick assembly shipped inside cabinet.
- 84" high has one full depth shelf in the top and four full depth shelves in the bottom.
- 90" high has two full depth shelves in the top and four full depth shelves in the bottom.
- 96" high has three full depth shelves in the top and four full depth shelves in the bottom.
- All shelves are 3/4" thick and are packaged separately.

Utility - 2 doors with Sliding Shelves



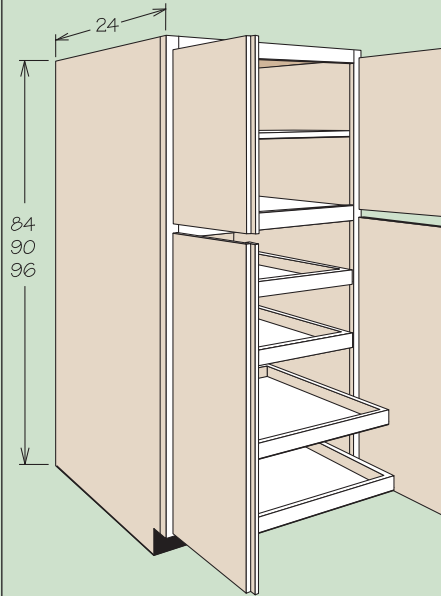
UT1224X84 4SSK
 UT1524X84 4SSK*
 UT1824X84 4SSK
 UT1524X90 4SSK*
 UT1824X90 4SSK
 UT1524X96 4SSK*
 UT1824X96 4SSK

● RD
 ● TPS

- 96" high has 4" toekick assembly shipped inside cabinet.
- 84" high has one full depth, 3/4" shelf in the top and four SSKs in the bottom.
- 90" high has two full depth, 3/4" shelves in the top and four SSKs in the bottom.
- 96" high has three full depth, 3/4" shelves in the top and four SSKs in the bottom.
- Sliding shelves are packaged separately.

* Not available in Maple Frost or Oak Frost.

Utility - 4 doors with Sliding Shelves

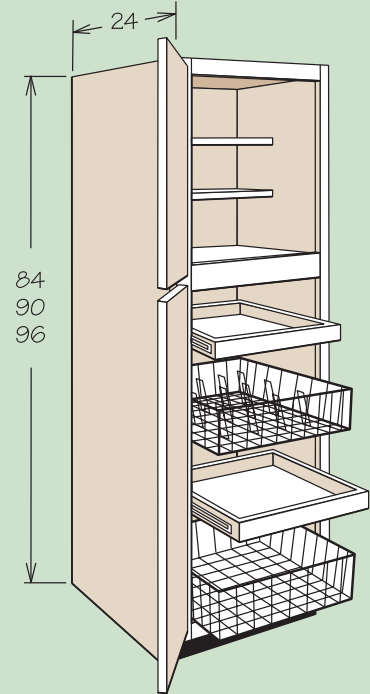


UT2424X84 4SSK
 UT3024X84 4SSK
 UT3624X84 4SSK
 UT2424X90 4SSK
 UT3024X90 4SSK
 UT3624X90 4SSK
 UT2424X96 4SSK
 UT3024X96 4SSK
 UT3624X96 4SSK

● RD
 ● TPS

- 96" high has 4" toekick assembly shipped inside cabinet.
- 84" high has one full depth, 3/4" shelf in the top and four SSKs in the bottom.
- 90" high has two full depth, 3/4" shelves in the top and four SSKs in the bottom.
- 96" high has three full depth, 3/4" shelves in the top and four SSKs in the bottom.
- Sliding shelves are packaged separately.

Utility Cabinet with Multi-Purpose Kit



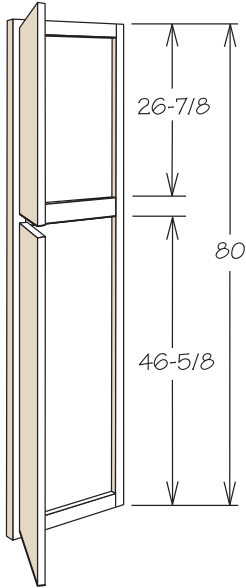
UT1824X84 PS SSK
 UT2424X84 PS SSK*
 UT1824X90 PS SSK
 UT2424X90 PS SSK*
 UT1824X96 PS SSK
 UT2424X96 PS SSK*

● RD
 ● TPS

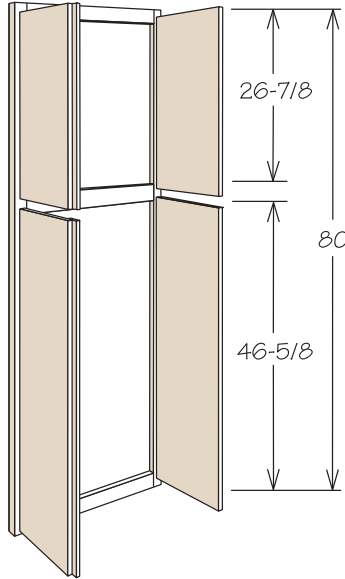
- 96" high has 4" toekick assembly shipped inside cabinet.
- Includes (2) sliding shelves, (1) wire basket, (1) wire plate rack, and (2) half-depth shelves which are packaged separately.

* Has 4 doors with battens.

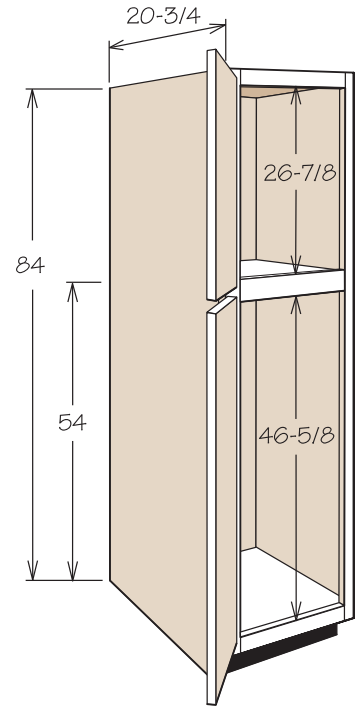
Utility Fronts - 2 doors



Utility Fronts - 4 doors



Vanity Linen Cabinet



Tall Cabinets

UT12x80 FRT & DR
UT18x80 FRT & DR

- Toekick ordered separately (TKA36T).

UT24x80 FRT & DR
UT36x80 FRT & DR

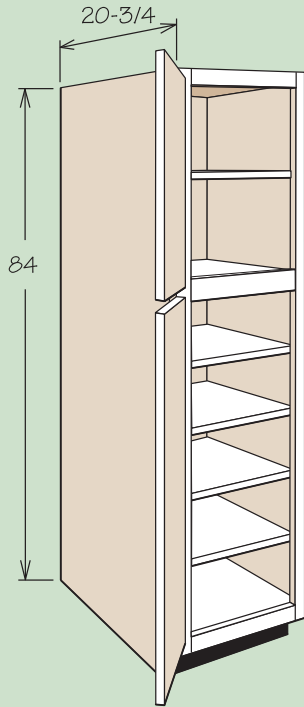
- Toekick ordered separately (TKA36T).
- Doors have battens.

VLC182184

● RD
● TPS

- Cabinet back is pre-drilled to accept up to 4 slide-out units in lower section.
- Shelves can be ordered separately. See Tall Cabinet Accessories for details.

Vanity Linen Cabinet with Adjustable Shelves

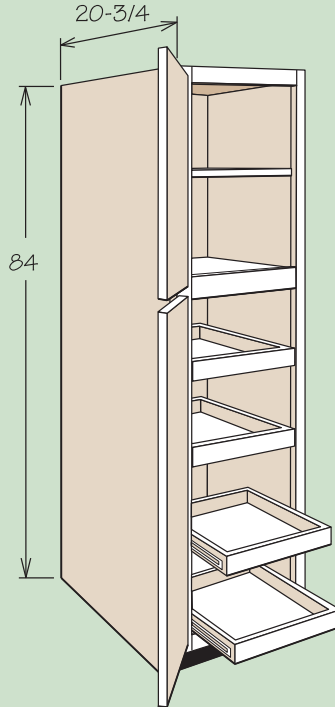


VLC182184 AS

- RD
- TPS

- Has one full depth, 3/4" shelf in the top and 4 full depth shelves in the bottom which are packaged separately.

Vanity Linen Cabinet with Sliding Shelves



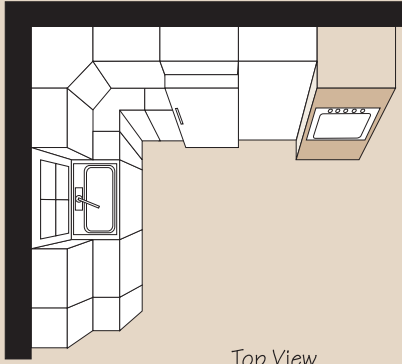
VLC182184 4SSK

- RD
- TPS

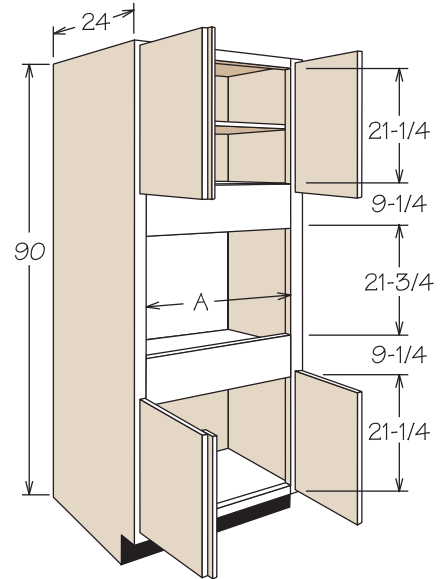
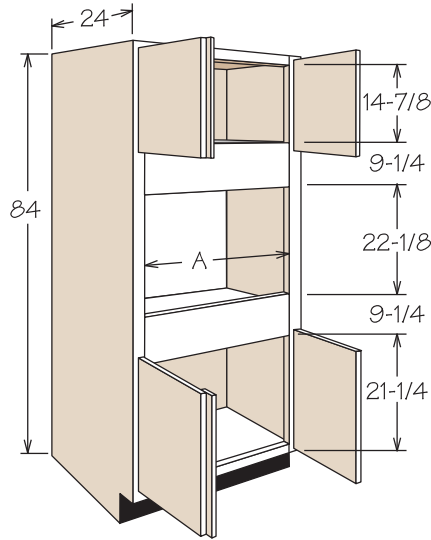
- Has one full depth, 3/4" shelf in the top and 4 sliding shelves in the bottom which are packaged separately.

Oven - Single - 84" high

Oven - Single - 90" high
with 1 shelf



Top View



Tall Oven Cabinets

Tall oven cabinets range in size from 84" to 96" high, 27" to 33" wide and are 24" deep.

Note: Cathedral doors are not available in base and vanity cabinets.

OVS2784
OVS3084
OVS3384

● RD
● TPS

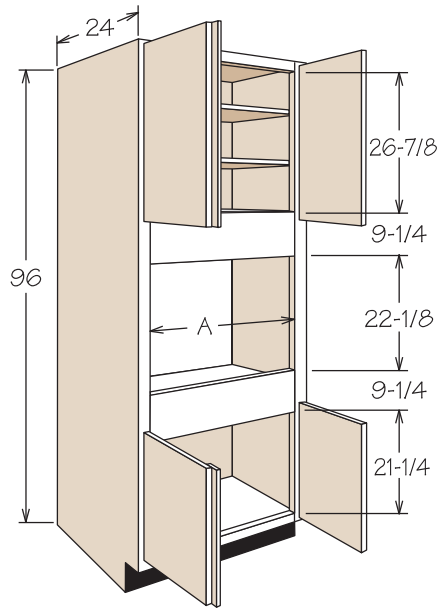
OVS2790 AS
OVS3090 AS
OVS3390 AS

● RD
● TPS

- 4 doors with a batten.
- No drawers.
- Existing opening A dimensions:
27" = 20-3/4" W x 22-1/8" H.
30" = 23-3/4" W x 22-1/8" H.
33" = 26-3/4" W x 22-1/8" H.
- Maximum cut-out A dimensions:
27" = 24 15/16 W x 37-3/8" H.
30" = 27 15/16 W x 37-3/8" H.
33" = 30 15/16 W x 37-3/8" H.

- **Has 1 full depth, 3/4" shelf in the top.**
- 4 doors with battens.
- No drawers.
- Existing opening A dimensions:
27" = 20-3/4" W x 21-3/4" H.
30" = 23-3/4" W x 21-3/4" H.
33" = 26-3/4" W x 21-3/4" H.
- Maximum cut-out A dimensions:
27" = 24 15/16" W x 37" H.
30" = 27 15/16" W x 37" H.
33" = 30 15/16" W x 37" H.

Oven - Single - 96" high with 2 shelves

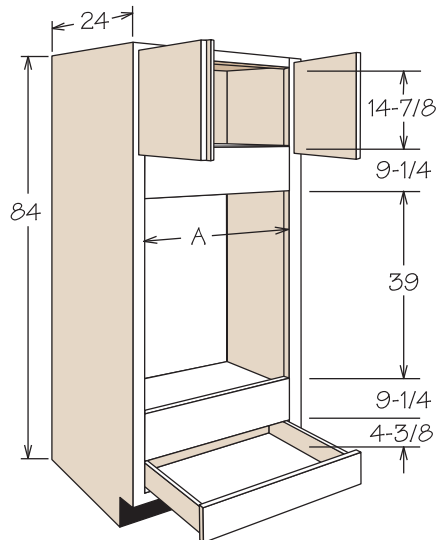


OVS2796 AS
OVS3096 AS
OVS3396 AS

● RD
● TPS

- Has 2 full depth, 3/4" shelves in the top.
- 4 doors with a batten.
- No drawers.
- 4" Toekick assembly shipped inside cabinet.
- Existing opening A dimensions:
27" = 20-3/4" W x 22-1/8" H.
30" = 23-3/4" W x 22-1/8" H.
33" = 26-3/4" W x 22-1/8" H.
- Maximum cut-out A dimensions:
27" = 24 15/16" W x 37-3/8" H.
30" = 27 15/16" W x 37-3/8" H.
33" = 30 15/16" W x 37-3/8" H.

Oven - Double - 84" high

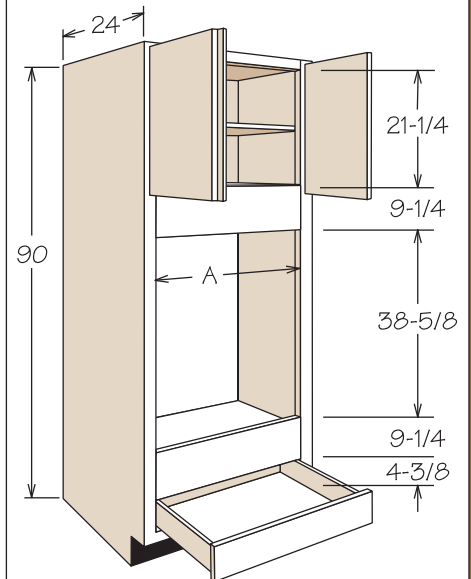


OVD2784
OVD3084
OVD3384

● RD
● TPS

- Features dovetail drawer construction.
- 2 doors with batten.
- Existing opening A dimensions:
27" = 20-3/4" W x 39" H.
30" = 23-3/4" W x 39" H.
33" = 26-3/4" W x 39" H.
- Maximum cut-out A dimensions:
27" = 24 15/16" W x 54-1/4" H.
30" = 27 15/16" W x 54-1/4" H.
33" = 30 15/16" W x 54-1/4" H.
- Maximum cut-out by removing drawer unit and frame horizontal:
27" = 24 15/16" W x 60-1/4" H.
30" = 27 15/16" W x 60-1/4" H.
33" = 30 15/16" W x 60-1/4" H.

Oven - Double - 90" high with 1 shelf

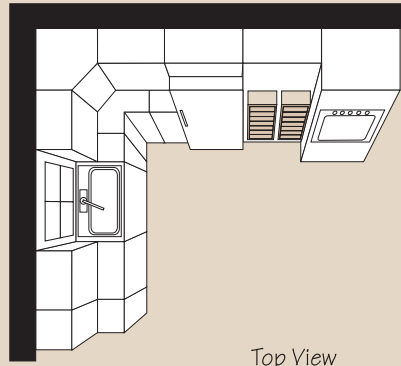
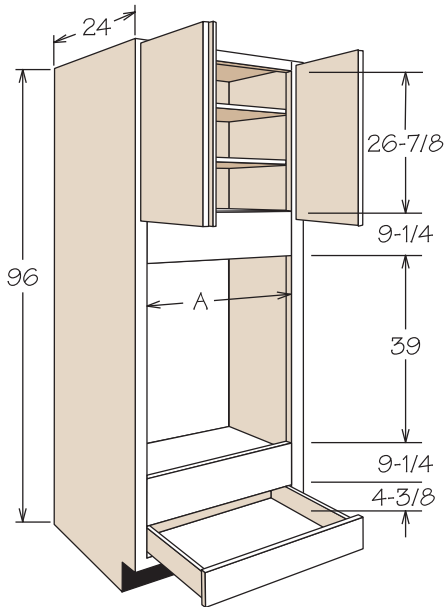


OVD2790 AS
OVD3090 AS
OVD3390 AS

● RD
● TPS

- Has 1 full depth, 3/4" shelf in the top.
- Features dovetail drawer construction.
- 2 doors with batten.
- Existing opening A dimensions:
27" = 20-3/4" W x 38-5/8" H.
30" = 23-3/4" W x 38-5/8" H.
33" = 26-3/4" W x 38-5/8" H.
- Maximum cut-out A dimensions:
27" = 24 15/16" W x 53-7/8" H.
30" = 27 15/16" W x 53-7/8" H.
33" = 30 15/16" W x 53-7/8" H.
- Maximum cut-out by removing drawer unit and frame horizontal:
27" = 24 15/16" W x 60-1/4" H.
30" = 27 15/16" W x 60-1/4" H.
33" = 30 15/16" W x 60-1/4" H.

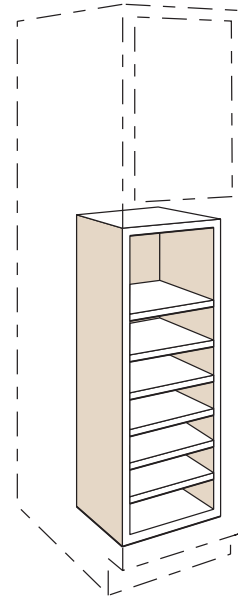
Oven - Double - 96" high with 2 shelves



Top View

Utility Cabinet Accessories

Pantry Swing-Out Kit 2 doors



Tall Cabinets

OVD2796 AS
OVD3096 AS
OVD3396 AS

● RD
● TPS

PCSK18

● Has 2 full depth, 3/4" shelves in the top.

- Features dovetail drawer construction.
- 2 doors with batten.
- 4" Toekick assembly shipped inside cabinet.
- Existing opening A dimensions:
27" = 20-3/4" W x 39" H.
30" = 23-3/4" W x 39" H.
33" = 26-3/4" W x 39" H.
- Maximum cut-out A dimensions:
27" = 24 15/16" W x 54-1/4" H.
30" = 27 15/16" W x 54-1/4" H.
33" = 30 15/16" W x 54-1/4" H.
- Maximum cut-out by removing drawer unit and frame horizontal:
27" = 24 15/16" W x 60-1/4" H.
30" = 27 15/16" W x 60-1/4" H.
33" = 30 15/16" W x 60-1/4" H.

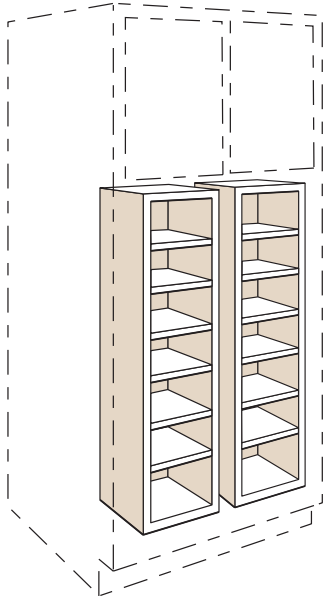
- Field installation accessory.
- For use inside UT1824.
- Can be used with PDSK18 and/or PS369.
- 3 fixed and 3 adjustable shelves.
- Overall height: 45".
- Overall width: 12".
- Overall depth: 8-3/16".

■ New Item

RD=Reduced Depth, TPS=TuffTech™ Plywood Sides

Note: Check oven manufacturers specifications to allow adequate clearance.

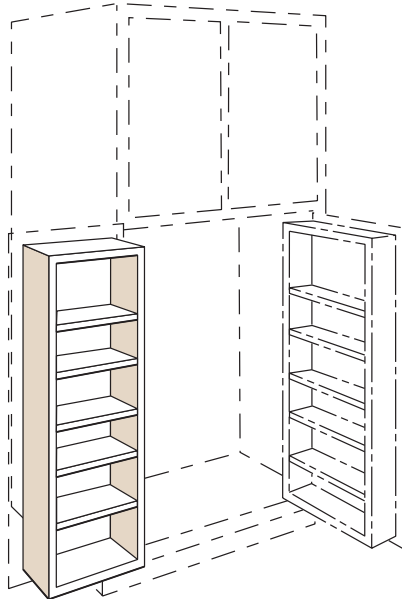
Pantry Swing-Out Kit 4 doors



PCSK36

- Field installation accessory.
- For use inside bottom of UT3624.
- Can be used with PDSK18 and/or PS369.
- 6 fixed and 6 adjustable shelves.
- Overall height: 45".
- Overall width: 25-5/8".
- Shelf depth: 8-3/16".

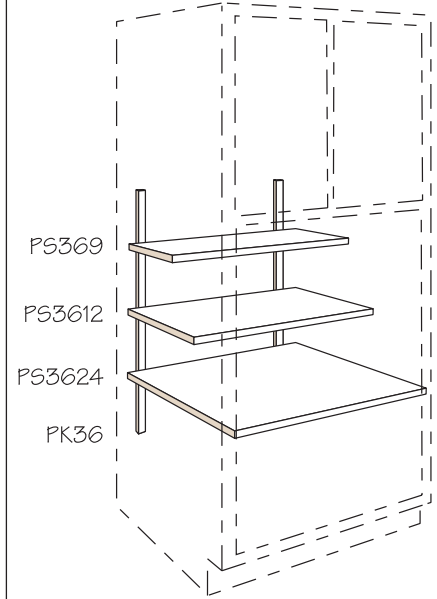
Pantry Door Shelf Kit



PDSK18

- Field installation accessory.
- For use inside 18" or 36" wide utility.
- Order each door unit separately.
- Can be used with PCSK and PS369 or PS3612.
- 5 adjustable shelves.
- Unit is 46" H x 12" W x 3-7/8"D.

Pantry Shelves



PS369

PS3612

PS3624

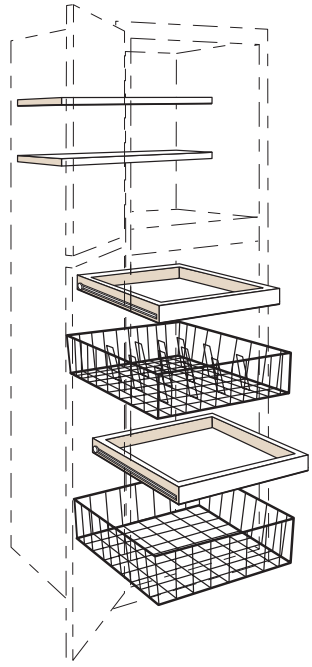
PK36

PS3624
PS3612
PS369
PK36

● RD

- Field installation accessory.
- 3/4" thick solid oak with natural finish.
- Order shelves individually.
- Shelf rests included.
- PS369 requires PK36 pilaster kit. Order separately.
- PK36 pilasters mount on sides.

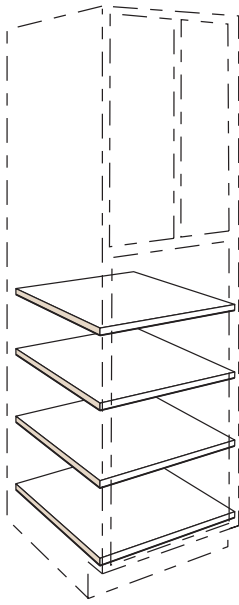
Pantry Multi Purpose Kit



MPSP18K
MPSP24K

- Field installation accessory.
- For use in UT1824 or UT2424.
- Includes two sliding shelves, one wire basket, one wire plate rack and two half-depth shelves, all hardware and instructions.

Shelf Kits-3/4"



SINGLE SHELVES

12" Deep	24" Deep
S1212	S1224
S1512	S1524
S1812	S1824
S2412	S2424
	S2724
21" Deep	S3024
S1821	S3324
	S3624

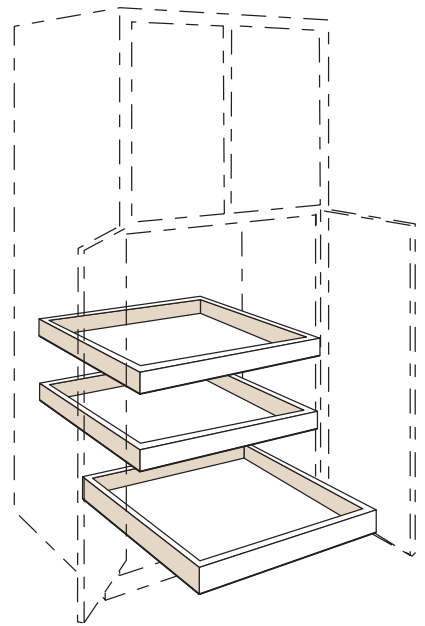
● RD

FOUR PACK

12" Deep	24" Deep
SK1212	SK1224
SK1512	SK1524
SK1812	SK1824
SK2412	SK2424
	SK2724
21" Deep	SK3024
SK1821	SK3324
	SK3624

- Field installation accessory.
- 3/4" thick.
- Finished to match cabinet interior.
- Shelf rests included.
- Edgebanded on front face only.
- 21" deep recommended for use in the Vanity Linen Cabinet.

Pantry Slide-Out Kit

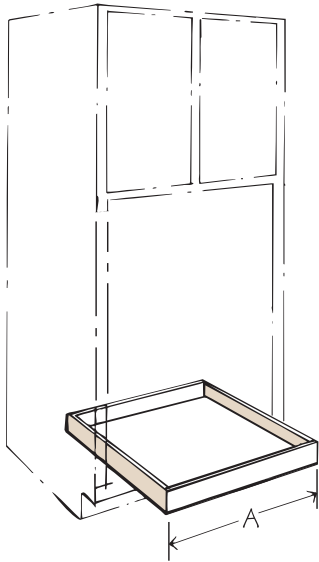


USS15-3K
USS18-3K
USS24-3K
USS30-3K
USS36-3K

● RD

- Field installation accessory.
- Includes 3 sliding shelves, all hardware and installation instructions
- Maple natural finish standard in all wood door styles. White in all white door styles.

Slide-Out Tray

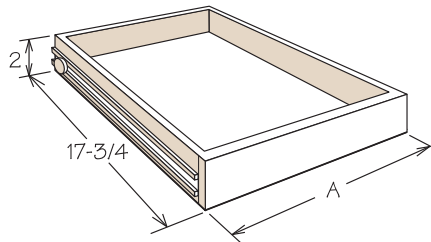


SSK12
SSK18
SSK24
SSK30
SSK36

● RD

- Includes drawer, all glide hardware and instructions.
- SSK12 A=8-1/2"
- SSK18 A=14-1/2"
- SSK24 A=20-1/2"
- SSK30 A=26-1/2"
- SSK36 A=32-1/2"
- SSK's can be used with all single and double door base style cabinets.
- The SSK Drill Template is required for all double door cabinets that have a fixed center stile. Order template separately.

Linen Cabinet Sliding Shelves



SSK1821

● RD

- **Recommended for use in the Vanity Linen Cabinet.**
- Drawer features MDF bottom and side mounted drawer glides.
- Includes tray, all glide hardware and instructions.
- A = 14-1/2"

